



GMT MONTHLY MEMBERSHIP PROGRESS REPORT

Results as of: 4/30/2017

Multiple District 26

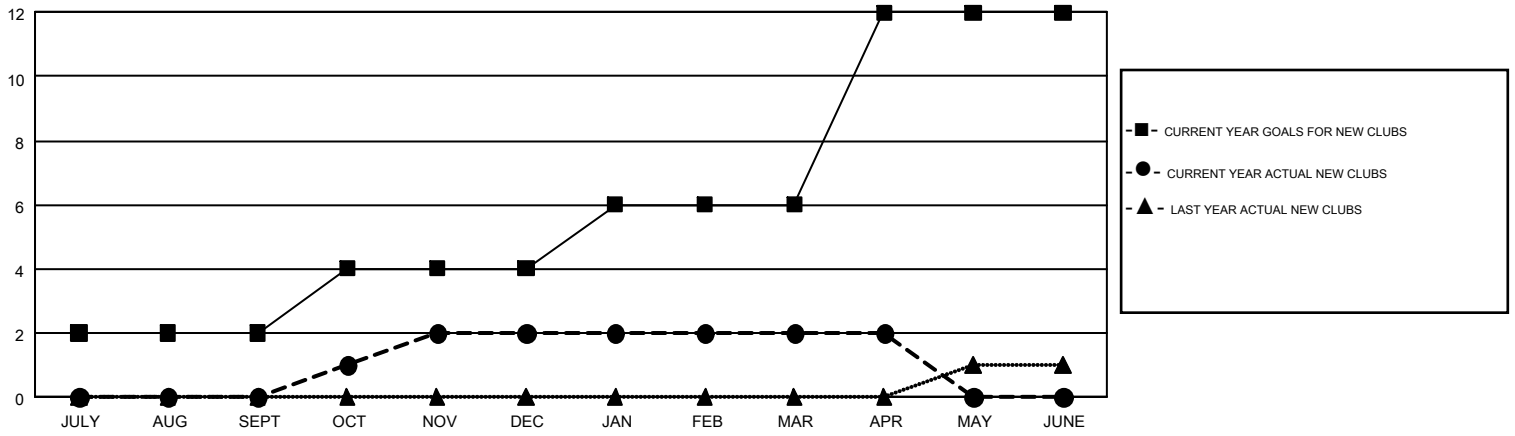
LOCATION: MISSOURI

GMT: HAL GRIFFIN

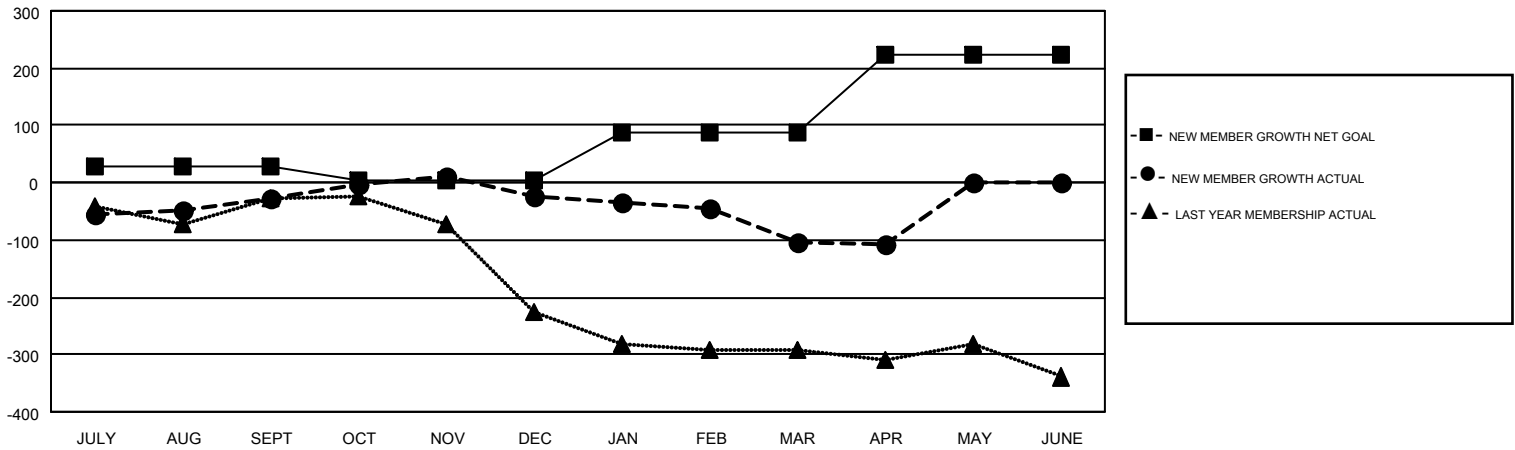
GMT CA 1

Clubs				Members			
RESULTS FOR 2016-2017				RESULTS FOR 2016-2017			
QUARTER	NEW CLUB GOAL	NEW CLUBS	DROPPED CLUBS	QUARTER	NEW MEMBER GROWTH NET GOAL (not reinstated or transfers)	NEW MEMBER GROWTH ACTUAL (not reinstated or transfers)	DROPPED MEMBERS ACTUAL (including transfers)
JULY/AUG/SEPT	2	0	1	JULY/AUG/SEPT	27	234	262
OCT/NOV/DEC	2	2	1	OCT/NOV/DEC	-22	212	209
JAN/FEB/MAR	2	0	3	JAN/FEB/MAR	84	228	306
APR/MAY/JUNE	6	0	1	APR/MAY/JUNE	133	71	76

GOALS AND ACTUAL NEW CLUBS CUMULATIVE



GOALS AND ACTUAL MEMBERS CUMULATIVE



DROPPED CLUBS: 6	202 CLUBS OF 339 ADDED 1 OR MORE NEW MEMBERS	GENDER DISTRIBUTION MALE 6,744 (74.83%) FEMALE 2,269 (25.17%)
DROPPED MEMBERS DECEASED 100 CLUB CANCELLED 42 OTHER 711 TOTAL 853	CLICK HERE FOR CUMULATIVE MEMBERSHIP DATA	TOTAL FAMILY UNIT MEMBERS 1,532 FAMILY MEMBERS PAYING HALF DUES 785